

- Row Crops
- South Texas: Disturbance Grassland
- South Texas: Sandy Mesquite - Evergreen Woodland
- South Texas: Sandy Mesquite Dense Shrubland
- South Texas: Sandy Mesquite Woodland and Shrubland
- Urban Low Intensity

Legend:

- Study Corridor
- Drain Flow

N

0 1,000 2,000

US Feet

HIDALGO COUNTY
WILLACY COUNTY

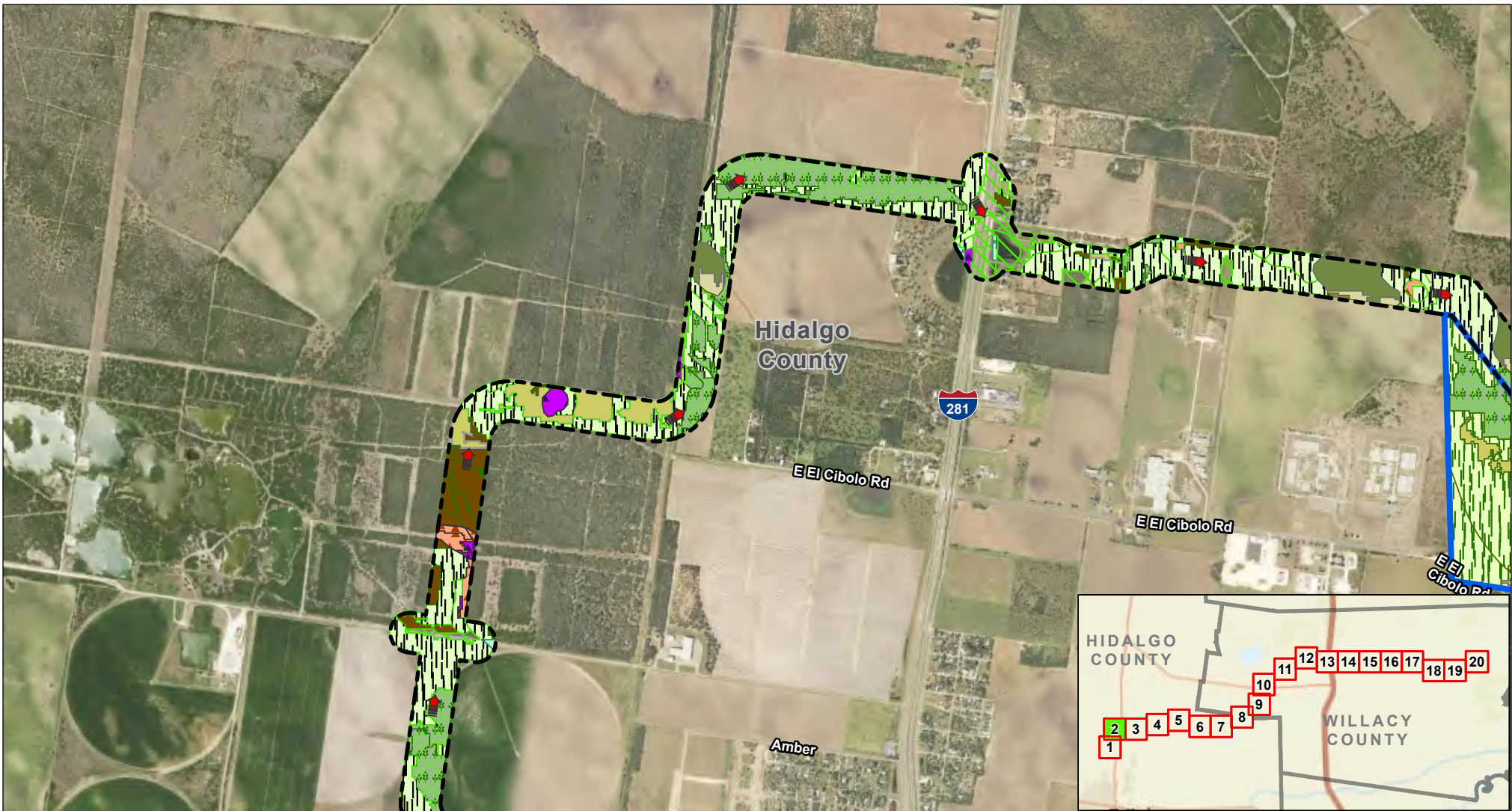
TX

Exhibit 12 Alternative 2 EMST Map Sheet 1 of 20 Raymondville Drain Project

Author : Joel F. Aguirre Updated : 9/26/2023

DISCLAIMER: RRP Consulting Engineers makes no guarantees as to the accuracy of data used in the construction of this map.

Path: S:\project\4408000_Prop\Repository\GIS\FOP_Encls-Encl_Series.aprx



- | | | | |
|-----------|--|--|--|
| Barren | South Texas: Clayey Mesquite Mixed Shrubland | South Texas: Sandy Mesquite - Evergreen Woodland | South Texas: Sandy Mesquite Savanna Grassland |
| Marsh | South Texas: Disturbance Grassland | South Texas: Sandy Mesquite Dense Shrubland | South Texas: Sandy Mesquite Woodland and Shrubland |
| Row Crops | South Texas: Clayey Blackbrush Mixed Shrubland | Urban Low Intensity | |

Legend:

- Study Corridor
- Drain Flow
- Proposed Detention Basin

N

0 1,000 2,000
US Feet

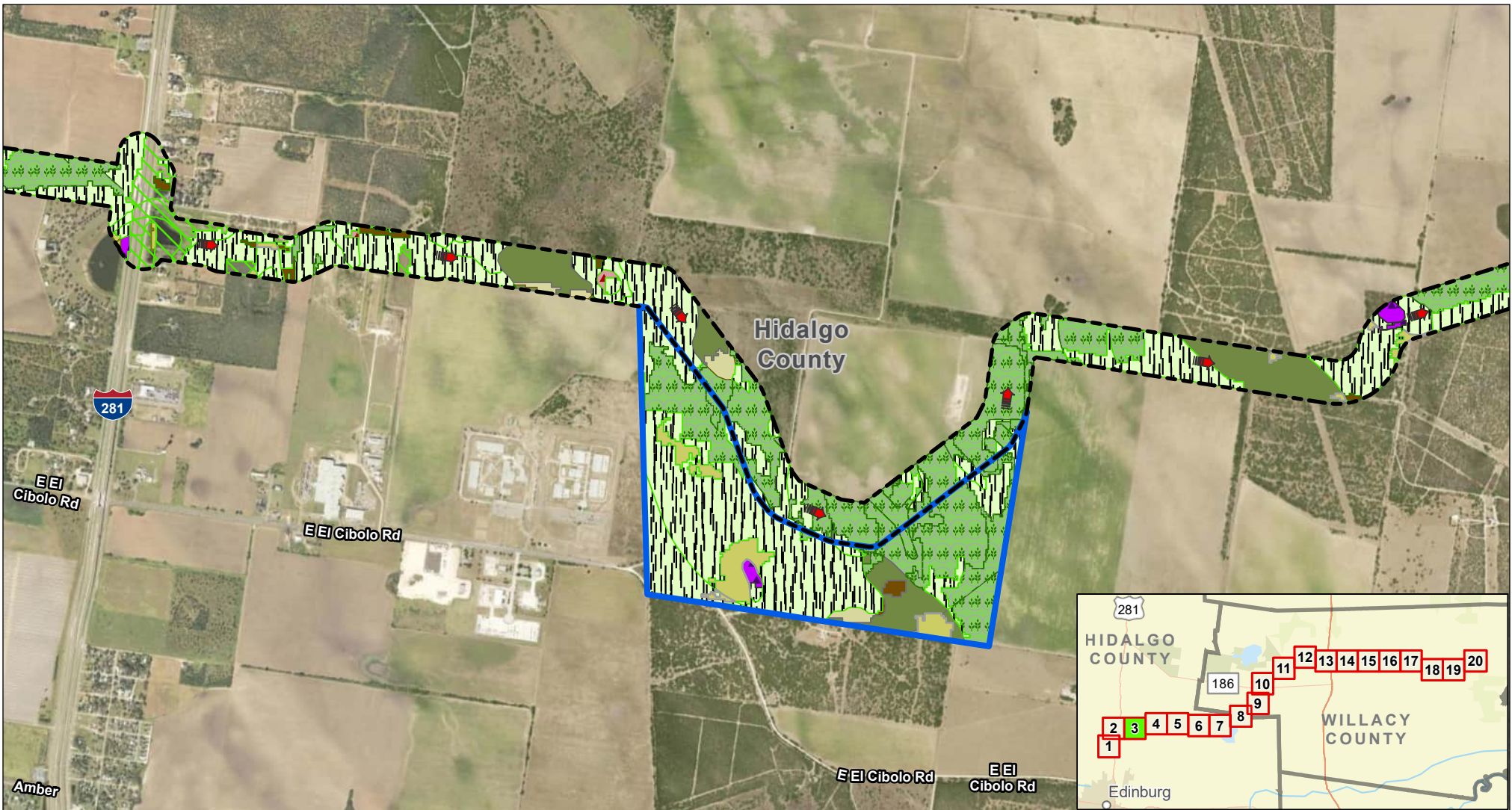
HIDALGO COUNTY
WILLACY COUNTY
TX

Exhibit 12 Alternative 2 EMST Map Sheet 2 of 20 Raymondville Drain Project

Author : Joel F. Aguirre Updated : 9/26/2023

DISCLAIMER: RRP Consulting Engineers makes no guarantees as to the accuracy of data used in the construction of this map.

Path: S:\project\4408000_ProjectRepository\GIS\PDF_Export\Emst_Series.aprx



- | | | | | |
|-----------|--|--|---|--|
| Barren | South Texas: Clayey Blackbrush Mixed Shrubland | South Texas: Sandy Disturbance Grassland | South Texas: Sandy Mesquite Dense Shrubland | South Texas: Sandy Mesquite Woodland and Shrubland |
| Marsh | South Texas: Clayey Mesquite Mixed Shrubland | South Texas: Sandy Mesquite - Evergreen Woodland | South Texas: Sandy Mesquite Savanna Grassland | Urban Low Intensity |
| Row Crops | | | | |

- Legend:**
- Drain Flow
 - Study Corridor
 - Proposed Detention Basin

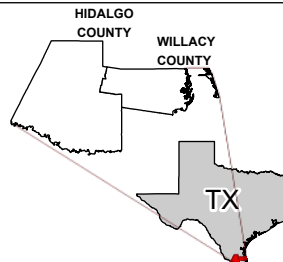
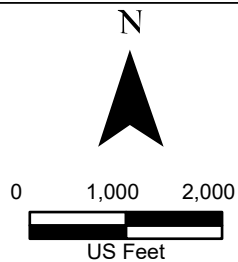


Exhibit 12 Alternative 2 EMST Map Sheet 3 of 20 Raymondville Drain Project

Author : Joel F. Aguirre Updated : 11/8/2023

DISCLAIMER: RRP Consulting Engineers makes no guarantees as to the accuracy of data used in the construction of this map.



- | | | | |
|--|--|---|--|
| Marsh | South Texas: Clayey Mesquite Mixed Shrubland | South Texas: Sandy Mesquite Dense Shrubland | South Texas: Sandy Mesquite Woodland and Shrubland |
| Row Crops | South Texas: Disturbance Grassland | South Texas: Sandy Mesquite Savanna Grassland | Urban High Intensity |
| South Texas: Clayey Blackbrush Mixed Shrubland | | | Urban Low Intensity |

Legend:

- Study Corridor
- Drain Flow
- Proposed Detention Basin

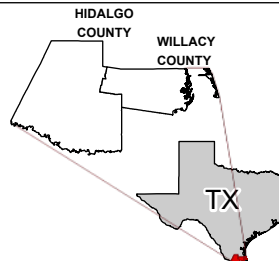
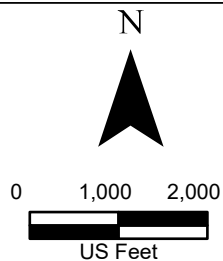
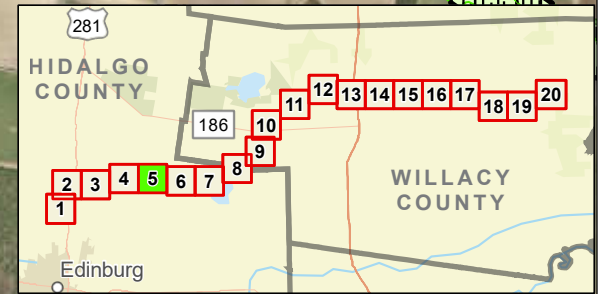


Exhibit 12 Alternative 2 EMST Map Sheet 4 of 20 Raymondville Drain Project

Author : Joel F. Aguirre Updated : 9/26/2023

DISCLAIMER: RRP Consulting Engineers makes no guarantees as to the accuracy of data used in the construction of this map.



- | | | | |
|---------------------|--|---|--|
| Marsh | South Texas: Clayey Mesquite Mixed Shrubland | South Texas: Sandy Mesquite Dense Shrubland | South Texas: Sandy Mesquite Woodland and Shrubland |
| Row Crops | South Texas: Clayey Blackbrush Mixed Shrubland | South Texas: Disturbance Grassland | Urban High Intensity |
| Urban Low Intensity | | | |

Legend:

Study Corridor

Drain Flow

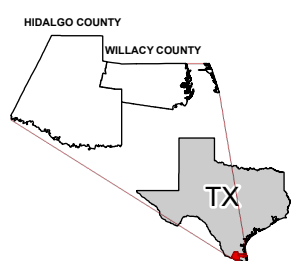
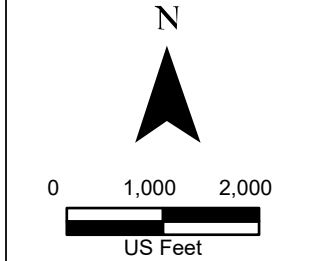


Exhibit 12 Alternative 2 EMST Map Sheet 5 of 20 Raymondville Drain Project

Author : Joel F. Aguirre Updated : 12/14/2023

DISCLAIMER: RRP Consulting Engineers makes no guarantees as to the accuracy of data used in the construction of this map.



- | | | |
|--|---|--|
| Row Crops | South Texas: Disturbance Grassland | South Texas: Sandy Mesquite Woodland and Shrubland |
| South Texas: Clayey Blackbrush Mixed Shrubland | South Texas: Sandy Mesquite Dense Shrubland | Urban Low Intensity |

Legend:

Study Corridor

Drain Flow

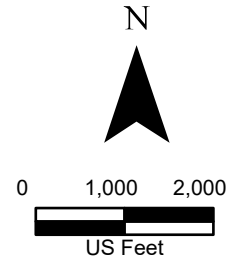


Exhibit 12 Alternative 2 EMST Map Sheet 6 of 20 Raymondville Drain Project

Author : Joel F. Aguirre Updated : 9/26/2023

DISCLAIMER: RRP Consulting Engineers makes no guarantees as to the accuracy of data used in the construction of this map.



- | | | | |
|--|---|--|--|
| Marsh | South Texas: Disturbance Grassland | South Texas: Sandy Mesquite - Evergreen Woodland | South Texas: Sandy Mesquite Woodland and Shrubland |
| Open Water | South Texas: Floodplain Evergreen Forest and Woodland | South Texas: Sandy Mesquite Dense Shrubland | Urban High Intensity |
| Row Crops | | | Urban Low Intensity |
| South Texas: Clayey Blackbrush Mixed Shrubland | | | |

Legend:

Study Corridor

Drain Flow

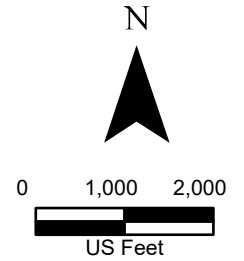


Exhibit 12 Alternative 2 EMST Map Sheet 7 of 20 Raymondville Drain Project

Author : Joel F. Aguirre Updated : 9/26/2023

DISCLAIMER: RRP Consulting Engineers makes no guarantees as to the accuracy of data used in the construction of this map.



- | | | | | | |
|------------|--|---|--|--|-----------------|
| Marsh | South Texas: Clayey Blackbrush Mixed Shrubland | South Texas: Disturbance Grassland | South Texas: Sandy Mesquite - Evergreen Woodland | South Texas: Sandy Mesquite Woodland and Shrubland | County Boundary |
| Open Water | South Texas: Clayey Mesquite Mixed Shrubland | South Texas: Floodplain Evergreen Forest and Woodland | South Texas: Sandy Mesquite Dense Shrubland | Urban High Intensity | |
| Row Crops | | | | Urban Low Intensity | |

- Legend:**
- Study Corridor
 - Drain Flow
 - County Boundary

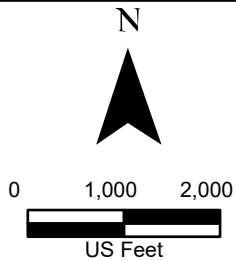


Exhibit 12 Alternative 2 EMST Map Sheet 8 of 20 Raymondville Drain Project

Author : Joel F. Aguirre Updated : 12/13/2023

DISCLAIMER: RRP Consulting Engineers makes no guarantees as to the accuracy of data used in the construction of this map.



- | | | | |
|------------|--|--|---------------------|
| Marsh | South Texas: Clayey Mesquite Mixed Shrubland | South Texas: Sandy Mesquite - Evergreen Woodland | Urban Low Intensity |
| Open Water | South Texas: Disturbance Grassland | South Texas: Sandy Mesquite Dense Shrubland | |
| Row Crops | | | |

Legend:

- Study Corridor
- Drain Flow

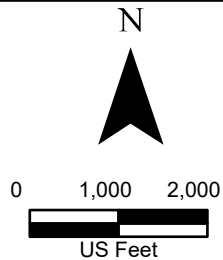
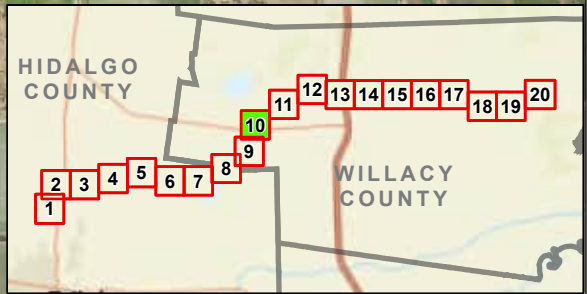


Exhibit 12 Alternative 2 EMST Map Sheet 9 of 20 Raymondville Drain Project

Author : Joel F. Aguirre Updated : 9/26/2023

DISCLAIMER: RRP Consulting Engineers makes no guarantees as to the accuracy of data used in the construction of this map.



- | | | |
|--|---|----------------------|
| Row Crops | South Texas: Disturbance Grassland | Urban High Intensity |
| South Texas: Clayey Mesquite Mixed Shrubland | South Texas: Sandy Mesquite Dense Shrubland | Urban Low Intensity |

Legend:

Study Corridor

Drain Flow

N

0 1,000 2,000

US Feet

HIDALGO COUNTY

WILLACY COUNTY

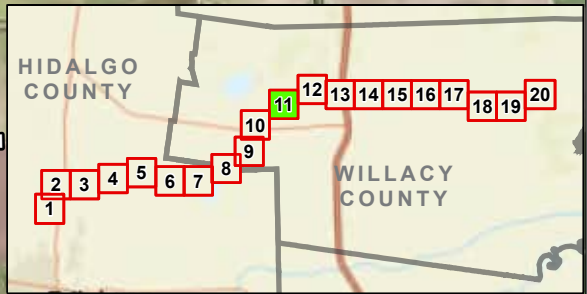
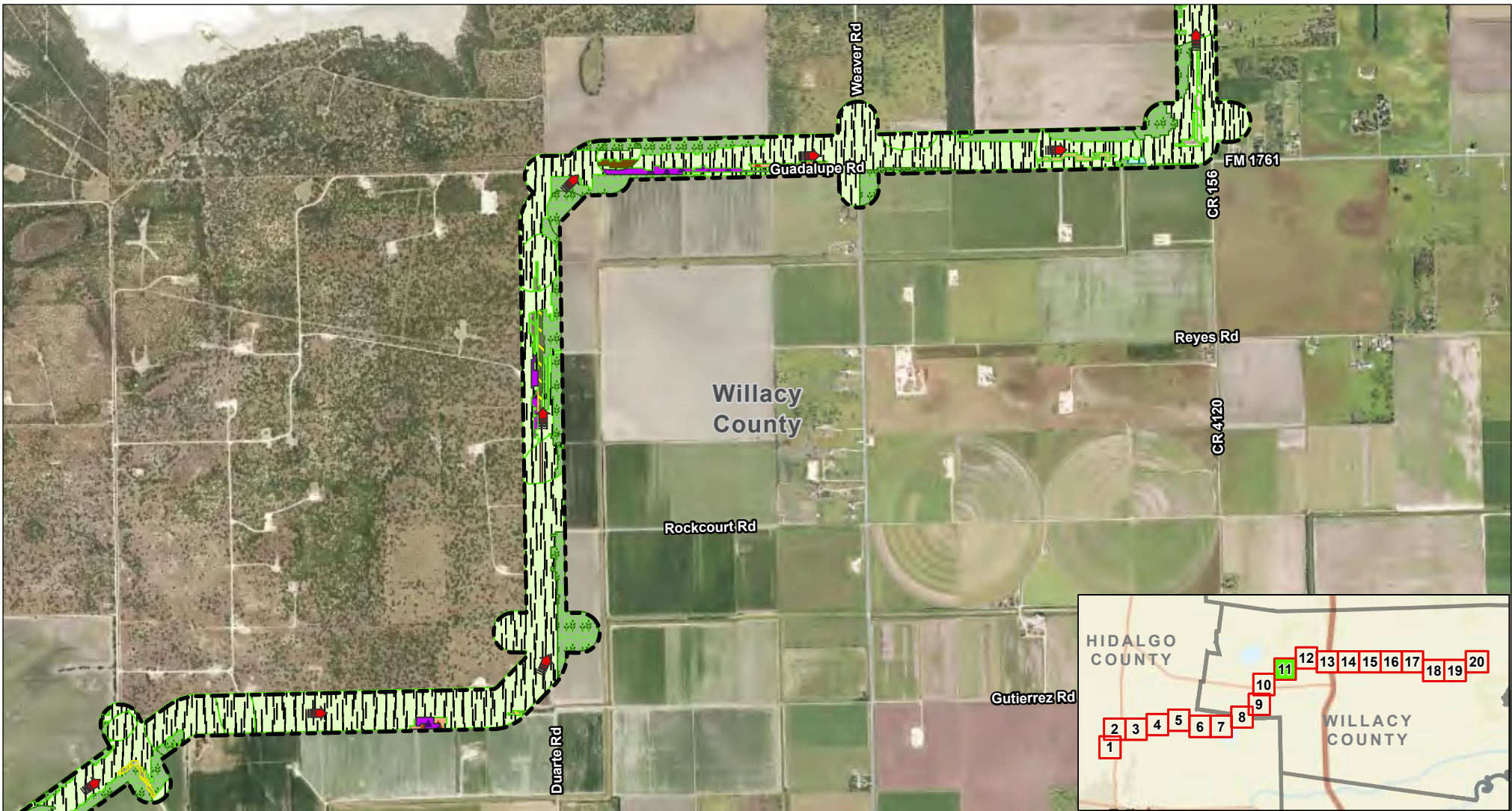
TX

Exhibit 12 Alternative 2 EMST Map Sheet 10 of 20 Raymondville Drain Project

Author : Joel F. Aguirre Updated : 9/26/2023

DISCLAIMER: RRP Consulting Engineers makes no guarantees as to the accuracy of data used in the construction of this map.

Path: S:\project\440800_Prop\Repository\GIS\PDF_Encls\Emst_Series.apx



- | | | | |
|--|--|--|----------------------|
| Marsh | South Texas: Clayey Mesquite Mixed Shrubland | South Texas: Sandy Mesquite Dense Shrubland | Urban High Intensity |
| Row Crops | South Texas: Disturbance Grassland | South Texas: Sandy Mesquite Woodland and Shrubland | Urban Low Intensity |
| South Texas: Clayey Blackbrush Mixed Shrubland | | | |

Legend:

- Study Corridor
- Drain Flow

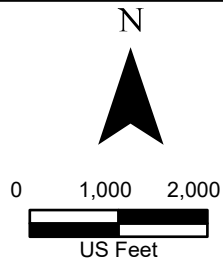
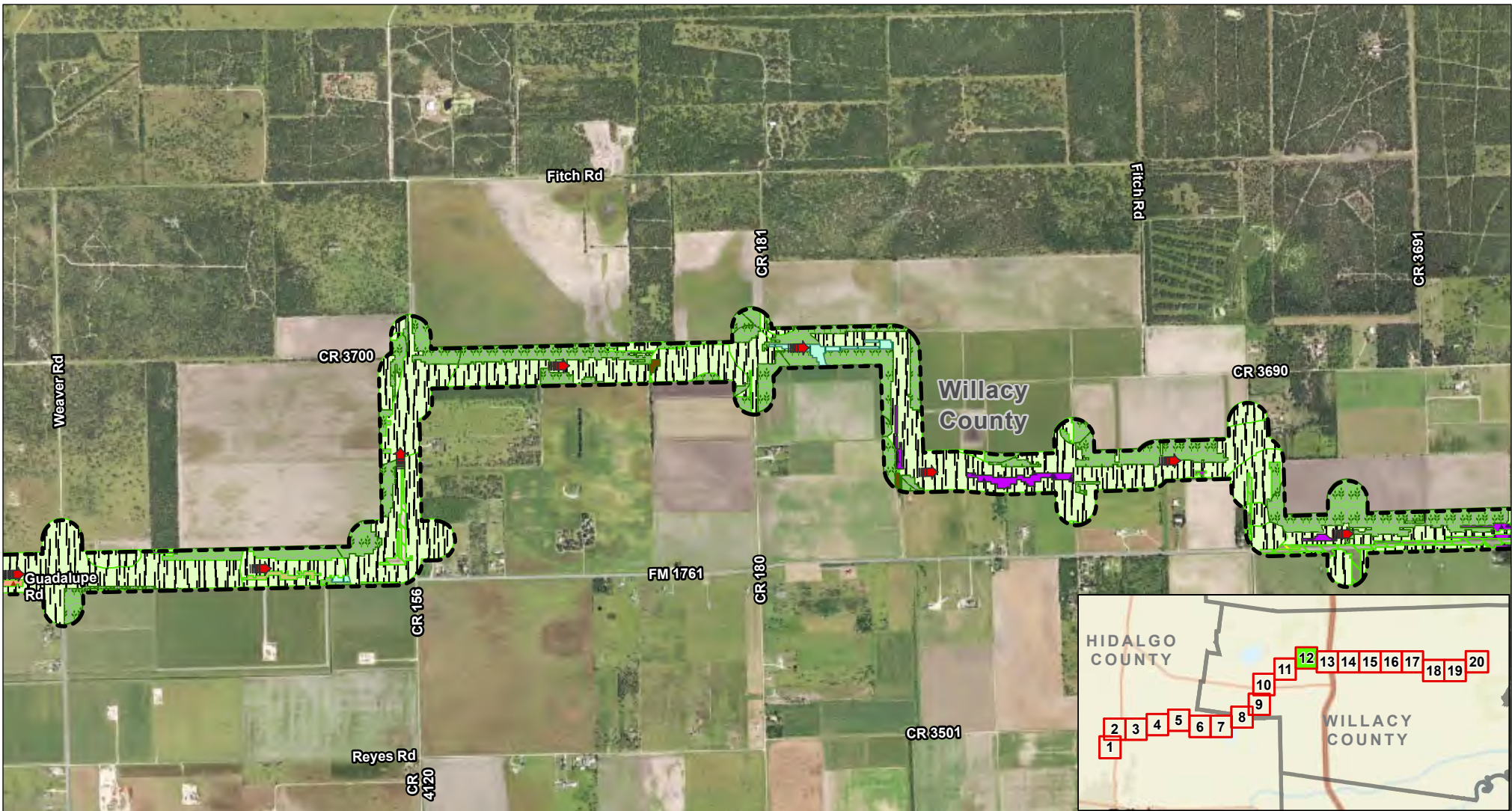


Exhibit 12 Alternative 2 EMST Map Sheet 11 of 20 Raymondville Drain Project

Author : Joel F. Aguirre Updated : 9/26/2023

DISCLAIMER: RRP Consulting Engineers makes no guarantees as to the accuracy of data used in the construction of this map.



- | | | |
|--|--|--|
| Marsh | South Texas: Disturbance Grassland | South Texas: Sandy Mesquite Woodland and Shrubland |
| Row Crops | South Texas: Sandy Mesquite - Evergreen Woodland | Urban Low Intensity |
| South Texas: Clayey Blackbrush Mixed Shrubland | | |

Legend:

- Study Corridor
- Drain Flow

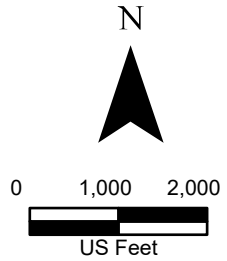
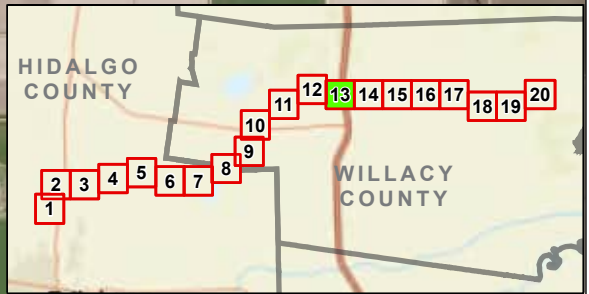
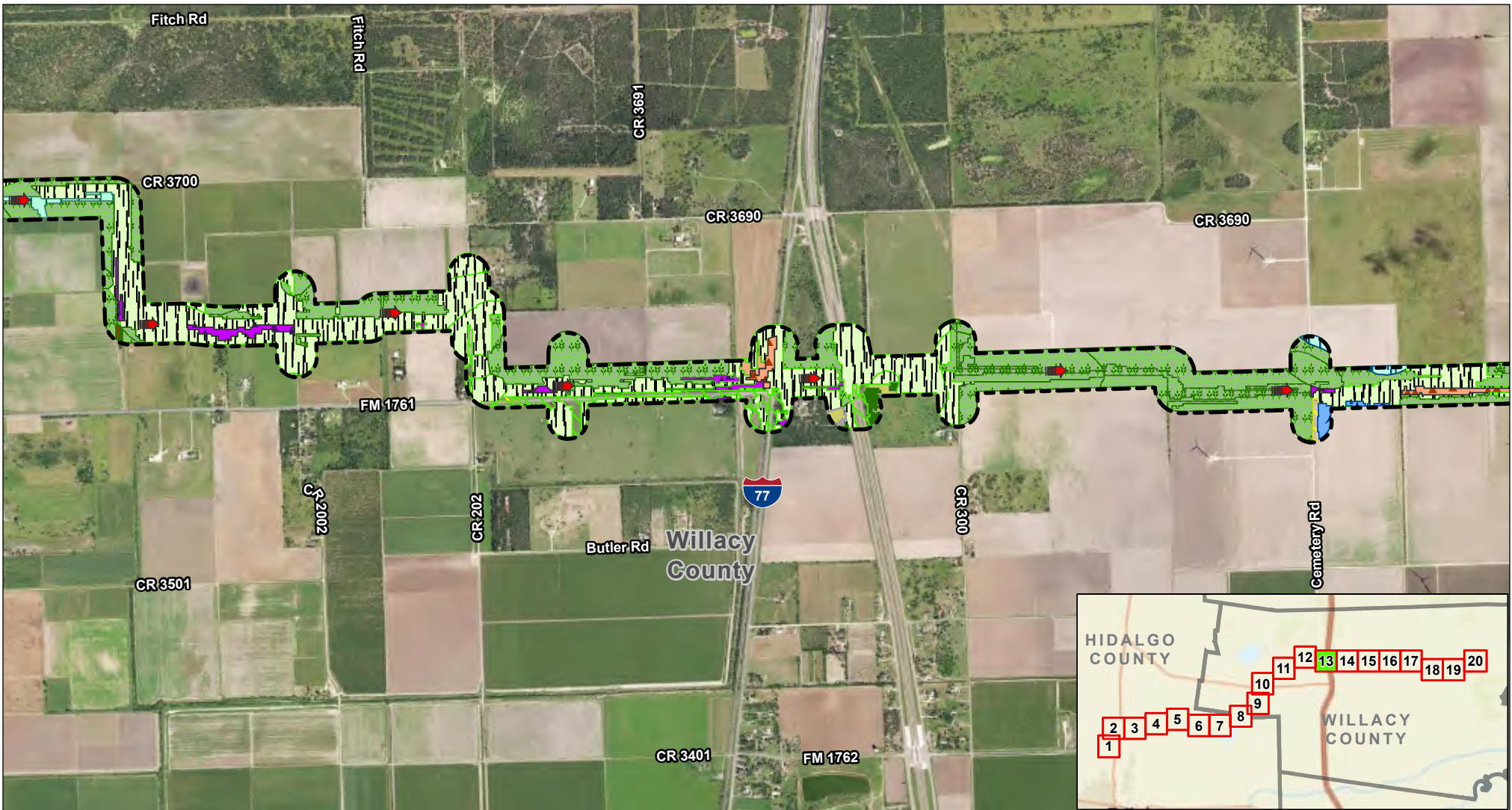


Exhibit 12 Alternative 2 EMST Map Sheet 12 of 20 Raymondville Drain Project

Author : Joel F. Aguirre Updated : 9/26/2023

DISCLAIMER: RRP Consulting Engineers makes no guarantees as to the accuracy of data used in the construction of this map.



- | | | | |
|--|--|--|--|
| Row Crops | South Texas: Clayey Mesquite Mixed Shrubland | South Texas: Sandy Mesquite - Evergreen Woodland | South Texas: Sandy Mesquite Woodland and Shrubland |
| South Texas: Clayey Blackbrush Mixed Shrubland | South Texas: Disturbance Grassland | South Texas: Sandy Mesquite Dense Shrubland | Urban High Intensity |
| | | | Urban Low Intensity |

Legend:

- Study Corridor
- Drain Flow

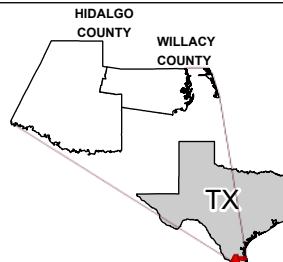
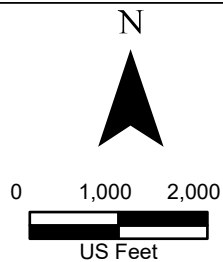
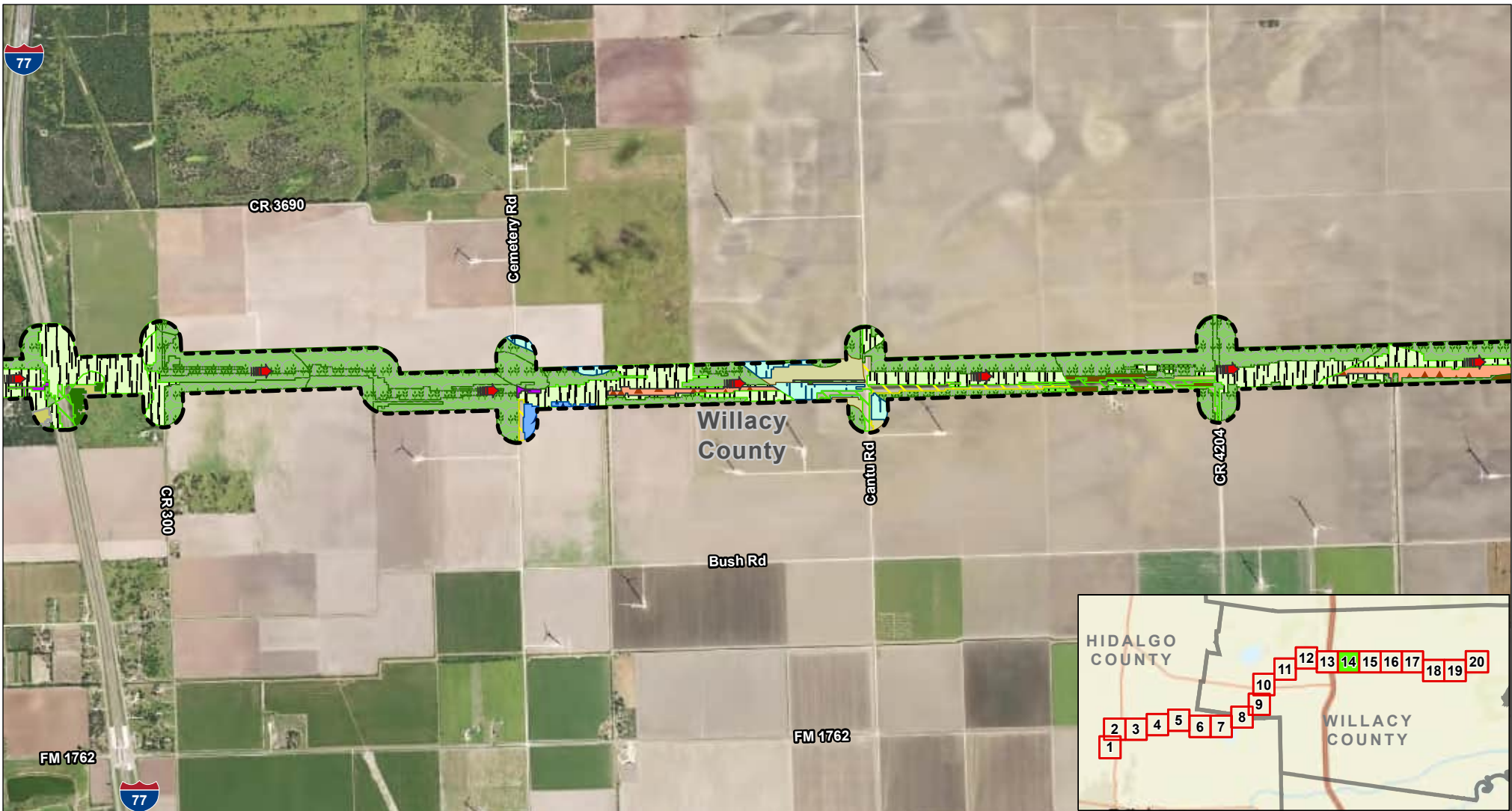


Exhibit 12 Alternative 2 EMST Map Sheet 13 of 20 Raymondville Drain Project

Author : Joel F. Aguirre Updated : 9/26/2023

DISCLAIMER: RRP Consulting Engineers makes no guarantees as to the accuracy of data used in the construction of this map.



- | | | | | |
|--|---|--|---|--|
| Barren | Coastal and Sandsheet: Deep Sand Live Oak Shrubland | South Texas: Clayey Blackbrush Mixed Shrubland | South Texas: Disturbance Grassland | South Texas: Sandy Mesquite Woodland and Shrubland |
| Coastal and Sandsheet: Deep Sand Grassland | Open Water | South Texas: Clayey Mesquite Mixed Shrubland | South Texas: Sandy Mesquite Dense Shrubland | Urban High Intensity |
| Row Crops | | | | Urban Low Intensity |

Legend:

- Study Corridor
- Drain Flow

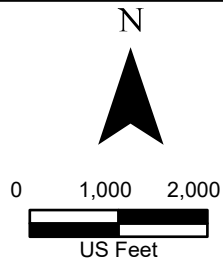


Exhibit 12 Alternative 2 EMST Map Sheet 14 of 20 Raymondville Drain Project

Author : Joel F. Aguirre Updated : 9/26/2023

DISCLAIMER: RRP Consulting Engineers makes no guarantees as to the accuracy of data used in the construction of this map.



- | | | |
|--|---|--|
| Row Crops | South Texas: Disturbance Grassland | South Texas: Sandy Mesquite Woodland and Shrubland |
| South Texas: Clayey Mesquite Mixed Shrubland | South Texas: Sandy Mesquite Dense Shrubland | Urban Low Intensity |

Legend:

Study Corridor

Drain Flow

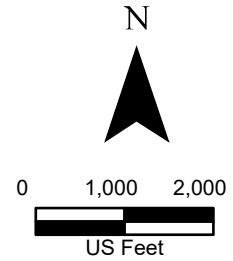
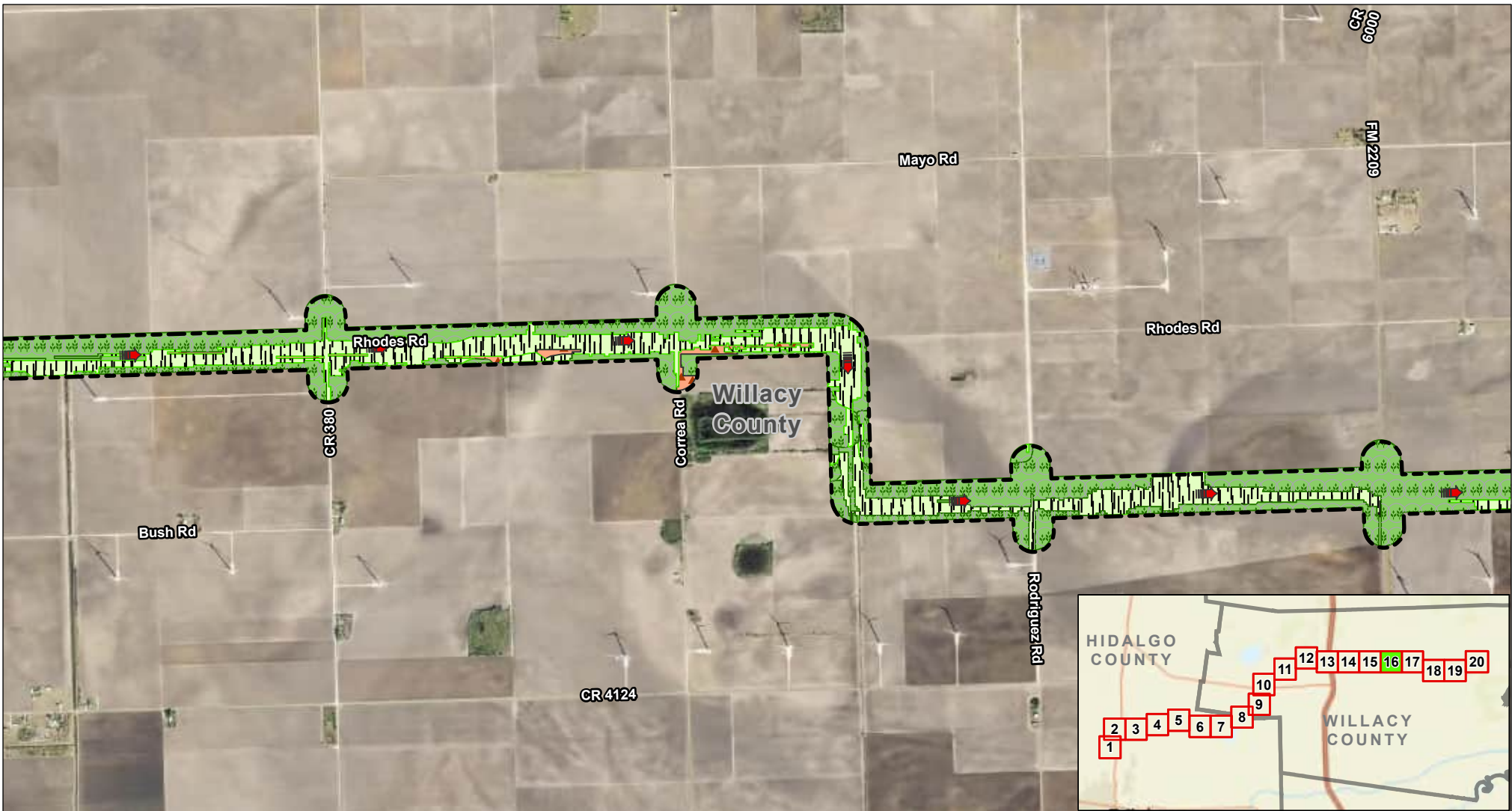


Exhibit 12 Alternative 2 EMST Map Sheet 15 of 20 Raymondville Drain Project



Author : Joel F. Aguirre Updated : 9/26/2023

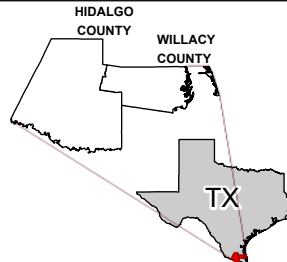
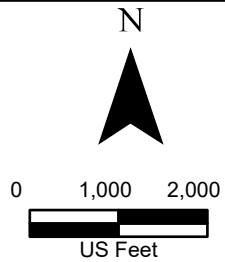
DISCLAIMER: RRP Consulting Engineers makes no guarantees as to the accuracy of data used in the construction of this map.



-  Row Crops
-  South Texas: Clayey Mesquite Mixed Shrubland
-  South Texas: Disturbance Grassland

Legend:

-  Study Corridor
-  Drain Flow



**Exhibit 12
Alternative 2
EMST Map
Sheet 16 of 20
Raymondville Drain Project**

Author : Joel F. Aguirre Updated : 9/26/2023

DISCLAIMER: RRP Consulting Engineers makes no guarantees as to the accuracy of data used in the construction of this map.



- | | | | |
|---------------------------|--|------------------------------------|--|
| Gulf Coast: Salty Prairie | South Texas: Clayey Blackbrush Mixed Shrubland | South Texas: Disturbance Grassland | South Texas: Sandy Mesquite Dense Shrubland |
| Marsh | South Texas: Clayey Mesquite Mixed Shrubland | South Texas: Saline Lake Grassland | South Texas: Sandy Mesquite Woodland and Shrubland |
| Row Crops | | | |

Legend:

- Study Corridor
- Drain Flow

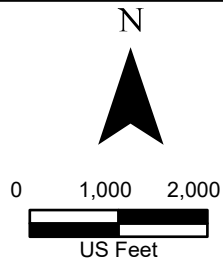


Exhibit 12
Alternative 2
EMST Map
Sheet 17 of 20
Raymondville Drain Project

Author : Joel F. Aguirre Updated : 9/26/2023

DISCLAIMER: RRP Consulting Engineers makes no guarantees as to the accuracy of data used in the construction of this map.



- | | | | | |
|--|--|--|---------------------------------------|------------------------------------|
| Coastal and Sandsheet: Deep Sand Grassland Swale Marsh | Gulf Coast: Salty Prairie | South Texas: Clayey Mesquite Mixed Shrubland | South Texas: Loma Evergreen Shrubland | South Texas: Saline Lake Grassland |
| Coastal: Salt and Brackish High Tidal Marsh | Row Crops | South Texas: Disturbance Grassland | South Texas: Saline Lake Flats | South Texas: Wind Tidal Flats |
| | South Texas: Clayey Blackbrush Mixed Shrubland | | | Urban High Intensity |

Legend:

- Study Corridor
- Drain Flow

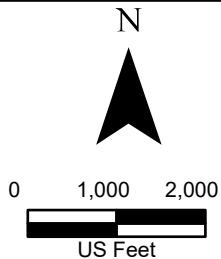
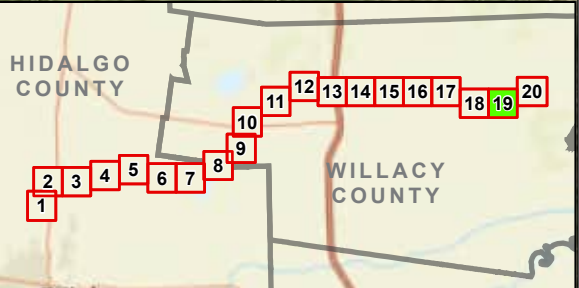
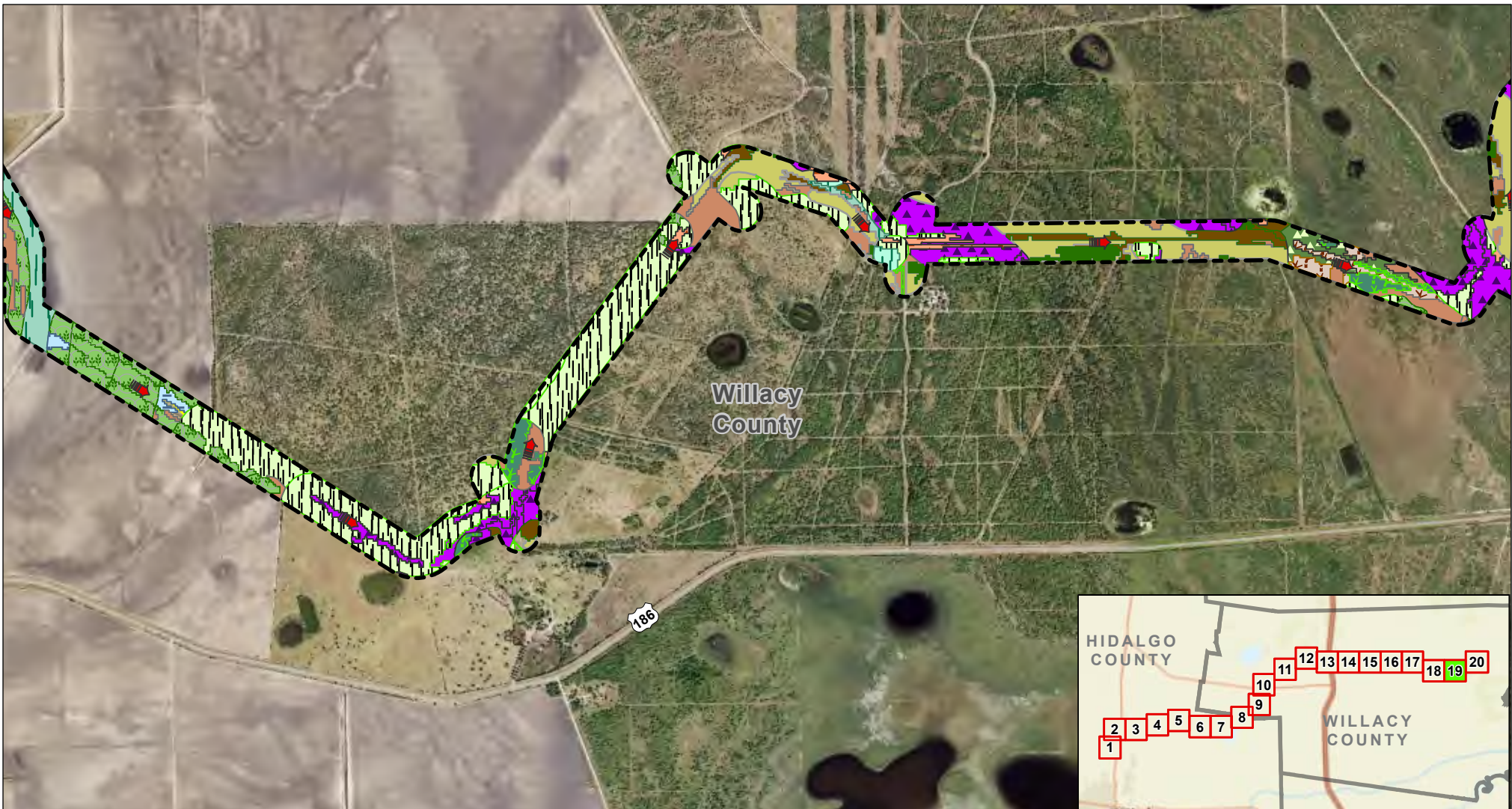


Exhibit 12 Alternative 2 EMST Map Sheet 18 of 20 Raymondville Drain Project

Author : Joel F. Aguirre Updated : 9/26/2023

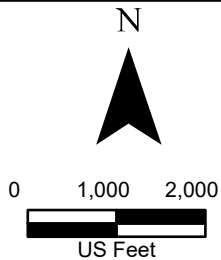
DISCLAIMER: RRP Consulting Engineers makes no guarantees as to the accuracy of data used in the construction of this map.



- | | | | | |
|---|--|---------------------------------------|--|--|
| Coastal: Salt and Brackish High Tidal Marsh | Row Crops | South Texas: Disturbance Grassland | South Texas: Sandy Mesquite - Evergreen Woodland | South Texas: Sandy Mesquite Woodland and Shrubland |
| Gulf Coast: Salty Prairie | South Texas: Clayey Blackbrush Mixed Shrubland | South Texas: Loma Evergreen Shrubland | South Texas: Sandy Mesquite Dense Shrubland | Urban Low Intensity |
| Marsh | South Texas: Clayey Mesquite Mixed Shrubland | | | |

Legend:

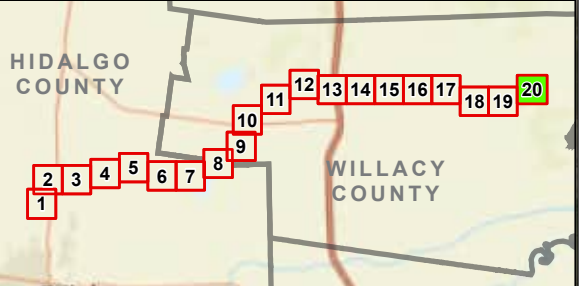
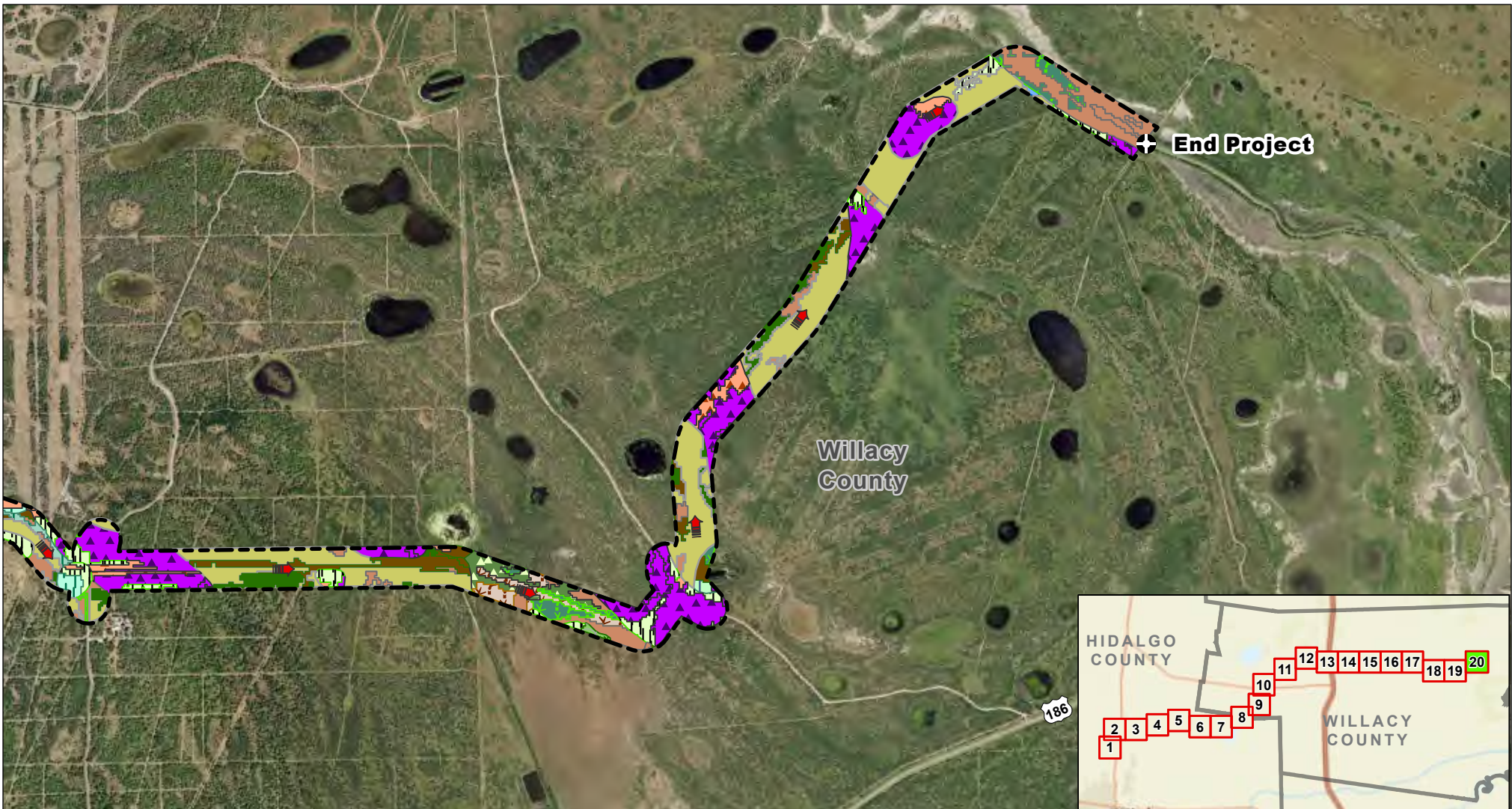
- Study Corridor
- Drain Flow



**Exhibit 12
Alternative 2
EMST Map
Sheet 19 of 20
Raymondville Drain Project**

Author : Joel F. Aguirre Updated : 9/26/2023

DISCLAIMER: RRP Consulting Engineers makes no guarantees as to the accuracy of data used in the construction of this map.



- | | | | | |
|--|--|--|--|--|
| Coastal and Sandsheet: Deep Sand Grassland Swale Marsh | Open Water | South Texas: Clayey Mesquite Mixed Shrubland | South Texas: Loma Evergreen Shrubland | South Texas: Sandy Mesquite Woodland and Shrubland |
| Gulf Coast: Salty Prairie | Row Crops | South Texas: Disturbance Grassland | South Texas: Sandy Mesquite - Evergreen Woodland | |
| Non-native Invasive: Saltcedar Shrubland | South Texas: Clayey Blackbrush Mixed Shrubland | South Texas: Loma Deciduous Shrubland | South Texas: Sandy Mesquite Dense Shrubland | |

Legend:

- Study Corridor
- Drain Flow

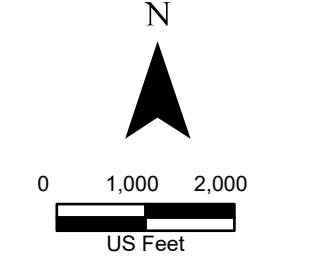


Exhibit 12 Alternative 2 EMST Map Sheet 20 of 20 Raymondville Drain Project

Author : Joel F. Aguirre Updated : 9/26/2023
 DISCLAIMER: RRP Consulting Engineers makes no guarantees as to the accuracy of data used in the construction of this map.